

Oatley

Then & Now



lions australia
oatley we serve 

Oatley Heritage & Historical Society

18 Month
Calendar
2013/14



January 2013

Monday	Tuesday	Wednesday	Thursday	Friday	Saturday	Sunday
	New Year's Day 1	2	3	4	5	OASC Meeting 6
7	8	Oatley Probus Meeting 9	10	11	12	OASC Meeting 13
14	15	16	17	18	19	OASC Meeting 20
21	22	23	24	25	26	OASC Meeting ○ Full Moon 27
Australia Day 28	School term resumes 29	30	31	The main road from Oatley Park and Oatley West to the Railway Station. This photo shows how much the trees have grown. Myles Dunphy Reserve had yet to be created but was clearly very bushy in 1925.		



Oatley School of Arts

1926 and 2012

February 2013

Monday	Tuesday	Wednesday	Thursday	Friday	Saturday	Sunday
<p>The Oatley School of Arts was built in 1905, funded by government and local donations. It was used as a church, school, theatre, for war memorial functions and a host of other local activities. In 1909 a billiard room was added to the rear of the building and was later used as a gambling den and in 1947 was raided by police and several men were fined £2 for illegal activities. In the late 1950's Kogarah Council gained ownership and converted it into a library as it is still today. The Baby Health Centre was added in 1969.</p>				1	2	OASC Meeting 3
Oatley Flora & Fauna Conservation Society Meeting 4	5	6	7	8	9	Chinese New Year OASC Meeting 10
11	12	Oatley Probus Meeting 13	St. Valentine's Day Kogarah Historical Society General Meeting (2pm) 14	15	16	OASC Meeting 17
18	19	20	21	Oatley Heritage & Historical Society Meeting 22	23	OASC Meeting 24
Oatley Flora & Fauna Conservation Society Meeting ○ Full Moon 25	26	27	28			

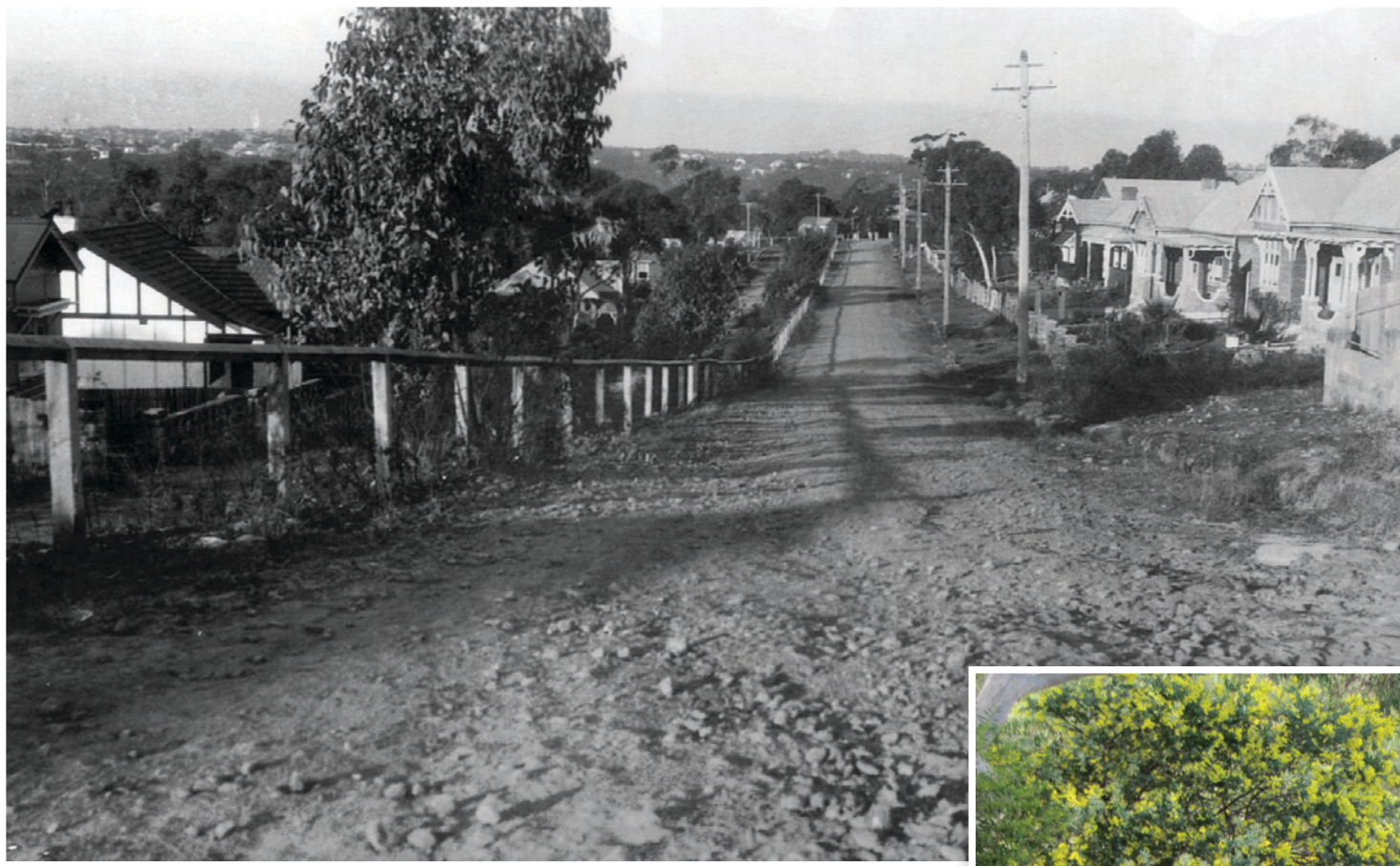


Sandy Beach, Oatley Park

1928 and 2012

March 2013

Monday	Tuesday	Wednesday	Thursday	Friday	Saturday	Sunday
<p>In 1887, Oatley Park was originally called Peakhurst Park. In 1906 it was transferred from State control to Hurstville Council and in March 1922 was renamed Oatley Park. Since 1927, the beach has been used by the Oatley Amateur Swimming Club. The beach was also popular for Sydney-siders to visit on weekends, catching the train to Oatley station and then a local bus to the Park.</p>				1	Gallery 101 2	Gallery 101 OASC Meeting 3
4	5	6	7	8	Gallery 101 Painting Demonstration 9	OASC Meeting 10
11	12	Oatley Probus Meeting 13	Kogarah Historical Society General Meeting (2pm) 14	OWPS Art & Craft Show Opening Night 15	OWPS Art & Craft Show 16	St. Patrick's Day Oatley Lions Music in the Park OWPS Art & Craft Show 17
18	19	20	21	22	23	OASC Meeting 24
Oatley Flora & Fauna Conservation Society Meeting 25	26	☉ Full Moon 27	28	Good Friday 29	Easter Saturday 30	Easter Sunday 31



Kitchener St, Oatley

1925 and 2012

April 2013

Monday	Tuesday	Wednesday	Thursday	Friday	Saturday	Sunday
Easter Monday 1	2	3	4	5	6	OASC Meeting 7
8	9	Oatley Probus Meeting 10	Kogarah Historical Society General Meeting (2pm) 11	School term ends 12	Gallery 101 Painting Demonstration 13	14
15	16	17	18	19	20	21
Oatley Flora & Fauna Conservation Society Meeting 22	23	24	Anzac Day ○ Full Moon 25	Oatley Heritage & Historical Society Meeting 26	27	28
School term resumes 29	30	<p>Kitchener Street was originally named William Street but was changed during World War 1 because of its possible reference to Kaiser Wilhelm II, the last German Emperor & King of Prussia. The British Lord Horatio Kitchener whose face is on the now famous 1914 military recruitment posters stating 'Your Country needs You' was thought to be a much more suitable namesake. Other examples of nationalism & influence during WWI include: British Prime Minister (1908-1916) Herbert Henry Asquith, Field Marshall Douglas Haig & Minister for Munitions/British Prime Minister (1916-1922) David Lloyd George.</p>				



Uniting Church, Letitia and Frederick St, Oatley

1958 and 2012

May 2013

Monday	Tuesday	Wednesday	Thursday	Friday	Saturday	Sunday
					Gallery 101	Gallery 101
		1	2	3	4	5
		Oatley Probus Meeting	Kogarah Historical Society General Meeting (2pm)		Gallery 101 Painting Demonstration	Mother's Day
6	7	8	9	10	11	12
13	14	15	16	17	18	19
				Oatley Heritage & Historical Society Meeting	Mortdale Community Services Fair ○ Full Moon	
20	21	22	23	24	25	26
Oatley Flora & Fauna Conservation Society Meeting					The first Methodist Church was built on this site in 1913. In 1972 the new church was built and in 1977 it became the Uniting Church. Note the v-shaped tree remains almost unchanged!	
27	28	29	30	31		



Commonwealth Bank

1959 and 2005

June 2013

Monday	Tuesday	Wednesday	Thursday	Friday	Saturday	Sunday
<p>The Commonwealth Bank started as an agency within the Oatley Post Office in 1922 and remained there til 1957 when the Bank purchased land in Frederick St just back from Oatley Ave for £1200. The bank then moved a prefabricated building from Sans Souci (where it had been since 1947) to the site in Oatley. It was opened in 1958 and the inaugural Bank Manager was Mr K W McKenna. But within a few years it was decided to build a two storey building on the site of the prefab Bank. During construction, the Bank moved next door and rented the ground floor of the corner building which is now owned by PRD Nationwide Real Estate. The prefab building was sold to St Joseph's Church Oatley in 1963 for £200 to be used as a classroom enabling the construction of the new Bank building to start in 1964 and opening later that year.</p>					1	2
					Gallery 101 Painting Demonstration	
3	4	5	6	7	8	9
Queen's Birthday		Oatley Probus Meeting	Kogarah Historical Society General Meeting (2pm)			
10	11	12	13	14	15	16
						○ Full Moon
17	18	19	20	21	22	23
Oatley Flora & Fauna Conservation Society Meeting				School term ends		
24	25	26	27	28	29	30

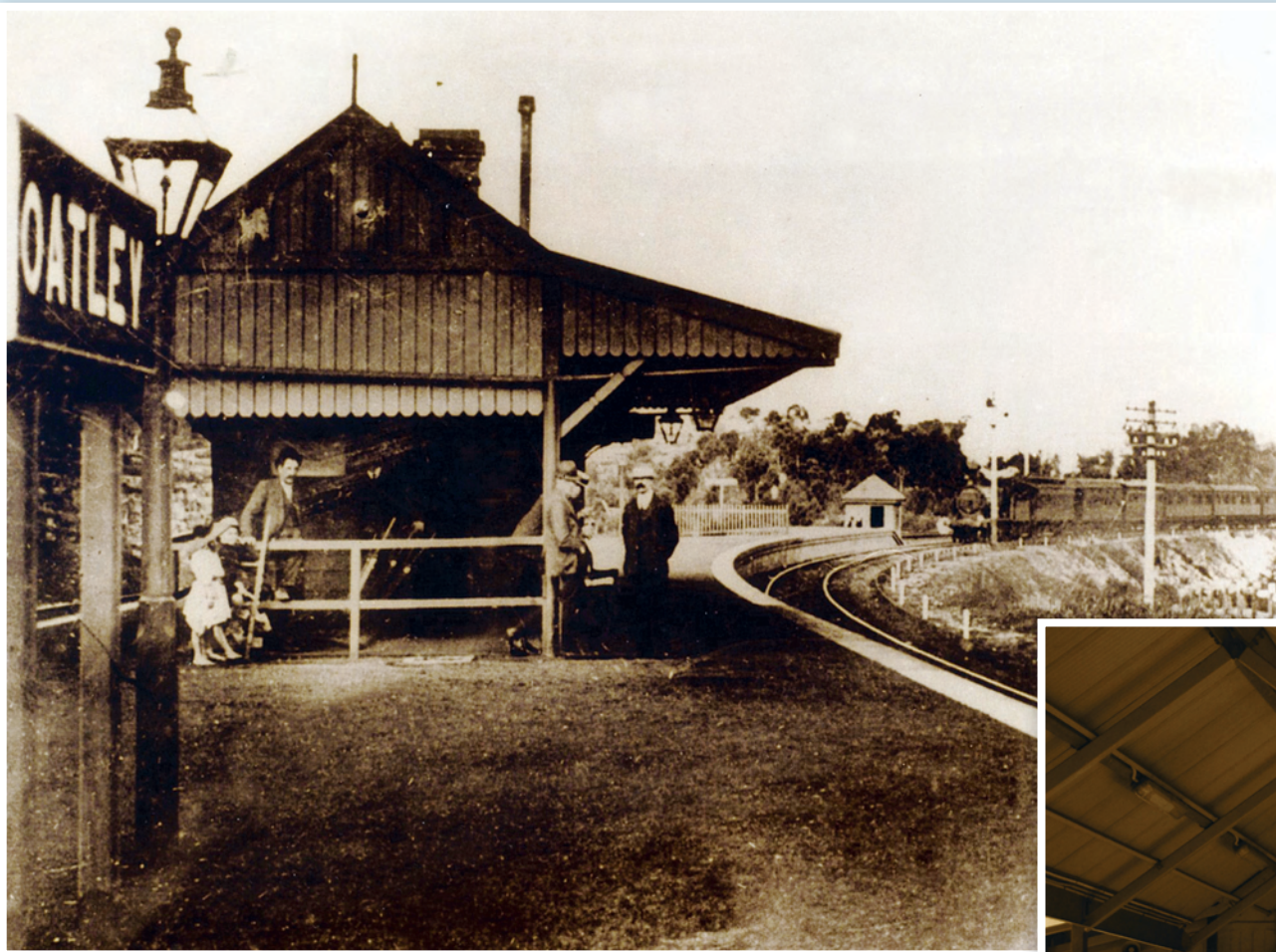
Mullane's Pharmacy

1951 and 2012



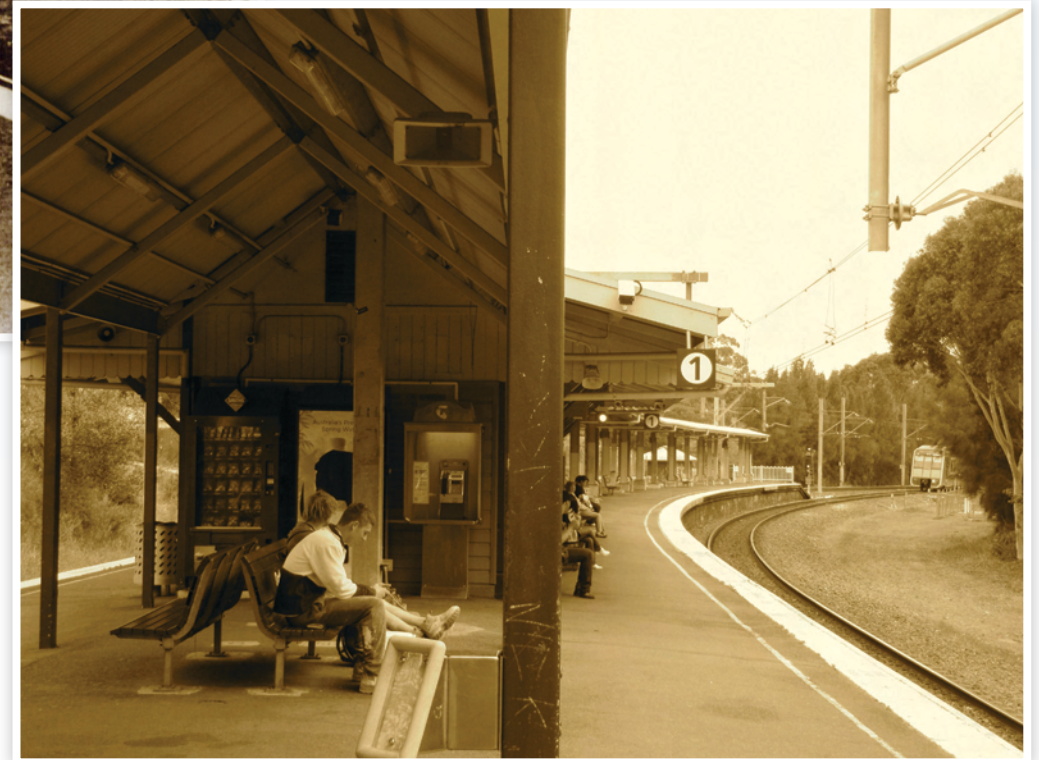
July 2013

Monday	Tuesday	Wednesday	Thursday	Friday	Saturday	Sunday
1	2	3	4	5	Gallery 101 Art Sale	Gallery 101 Art Sale
8	9	Oatley Probus Meeting	Kogarah Historical Society General Meeting (2pm)	12	Gallery 101 Painting Demonstration	14
School term resumes	16	17	18	19	20	21
Oatley Flora & Fauna Conservation Society Meeting ○ Full Moon	23	24	25	Oatley Heritage & Historical Society Meeting	27	28
Education Week starts	30	31	Mullane's Pharmacy was opened in 1951 by Pat Mullane, then just 25. The old photo shows his brand new FJ Holden parked out front and also his daughter Kath (on the tricycle). Pelagia Billiris took over the business almost ten years ago from previous owner Julie Doran who worked with Mr Mullane. Pelagia has many bottles and containers plus the original scales from Mr Mullane's days there on display. The old red phone box has been replaced with a current model and a larger post box has been relocated across the road. The buildings, including the cafe next door, remain the same today. Additions and extensions to the pharmacy have been approved by council to expand the pharmacy and post office and house medical suites on the second floor in the near future.			



Oatley Station

1905 and 2012



August 2013

Monday	Tuesday	Wednesday	Thursday	Friday	Saturday	Sunday
<p>In 1905 the Oatley railway platform (or station) was moved from near the Oatley Hotel to where it is today. The new section of rail from Mortdale to near the Como Bridge reduced the gradient which was proving too difficult for the coal trains from the South Coast to Sydney. Unfortunately, there are no known pictures of the old platform. Having the railway at its doorstep plus the Baths and Pleasure Grounds, Oatley was a popular holiday destination for Sydney-siders. The hotel's location was very convenient for holiday makers to arrive by train and stay at the hotel.</p>			1	Education Week ends 2	Gallery 101 Annual Exhibition 3	Gallery 101 Annual Exhibition 4
Bank Holiday 5	6	7	Kogarah Historical Society General Meeting (2pm) 8	9	Gallery 101 Painting Demonstration 10	11
12	13	Oatley Probus Meeting 14	15	16	17	18
19	20	○ Full Moon 21	22	Oatley Heritage & Historical Society Meeting 23	24	25
Oatley Flora & Fauna Conservation Society Meeting 26	27	28	29	30	31	



Oatley Park Castle

1937 and 2012

September 2013

Monday	Tuesday	Wednesday	Thursday	Friday	Saturday	Sunday
30	The Castle was built by unemployed men during the Great Depression (1929-1933). Sandstone was transported by barge from further along the river and was used extensively in Oatley Park to build the Castle and barriers along the roadways. The Castle was originally used as a kiosk and now has electric BBQs and can be used for functions (bookings essential through Hurstville Council, ph: 9330 6209)					Father's Day 1
2	3	4	5	6	7	8
9	10	Oatley Probus Meeting	Kogarah Historical Society General Meeting (2pm)	13	Gallery 101 Painting Demonstration	15
16	17	18	○ Full Moon	School term ends	21	22
Oatley Flora & Fauna Conservation Society Meeting	24	25	26	27	28	29
23						



Oatley 150th Anniversary

October 1983

Oatley Lions Club Festival

An annual local celebration hosted by the Oatley Lions Club. The first Lions Festival was held in March 1977 and has grown to 172 various stalls in 2012. The festival held each October is run entirely by volunteers and has something for all ages including music and dancing from local schools and organisations, animal farm, amusement rides, sideshow games, raffles, competitions and prizes. Profits from the festival go back into helping the various sporting and other groups and residents of Oatley.

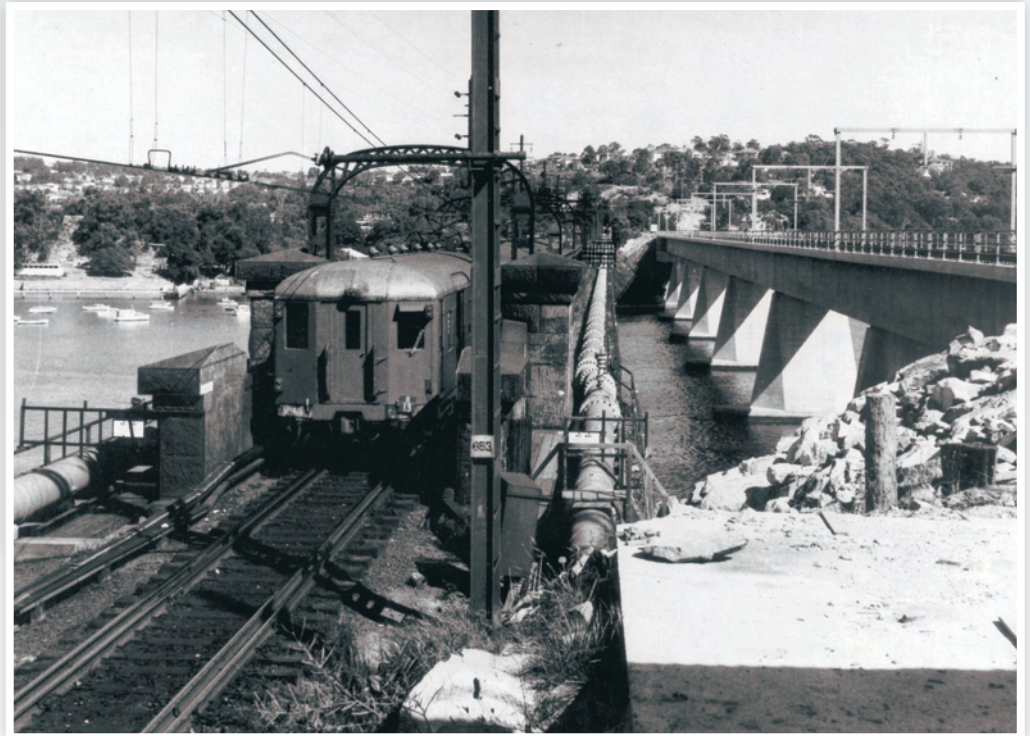


Oatley Lions Club Festival

October 2011

October 2013

Monday	Tuesday	Wednesday	Thursday	Friday	Saturday	Sunday
	1	2	3	4	5	6
Labour Day 7	School term resumes 8	Oatley Probus Meeting 9	Kogarah Historical Society General Meeting (2pm) 10		Gallery 101 Painting Demonstration 12	OASC Meeting 13
14	15	16	17	○ Full Moon 18	Oatley Lions Festival 19	OASC Meeting 20
21	22	23	24	Oatley Heritage & Historical Society Meeting 25	26	OASC Meeting 27
Oatley Flora & Fauna Conservation Society Meeting 28	29	30	31	<p>On 29th October 1983, Oatley celebrated its 150th Anniversary. It was at this ceremony that the Oatley Clock, designed by Architect Clive Stevens, was dedicated by Robert Oatley, Winemaker of Oatley Vineyards Mudgee, and direct descendant of James Oatley. The clock was built with funds from the local community and the Oatley Lions Club. An estimated 10,000 people, some dressing in 1800's costumes, attended the anniversary celebrations which included vintage cars, bands and Clydesdale horses.</p>		



Oatley-Como Rail Bridge

1890s, 1972 and 2012

November 2013

Monday	Tuesday	Wednesday	Thursday	Friday	Saturday	Sunday
<p>With sections manufactured in Middlesborough, England and transported here by sea, the original rail bridge was built in 1885. The railway was built as a single track but was actually four lines closely spaced (a gauntlet track). In 1972, a new double-lined bridge was built because the single line was causing delays. The community fought to keep the old bridge as a pedestrian alternative and is now a very popular walk and cycleway.</p>				1	Gallery 101 2	Gallery 101 OASC Meeting 3
4	Melbourne Cup 5	6	7	8	Gallery 101 Painting Demonstration 9	OASC Meeting 10
Remembrance Day 11	12	Oatley Probus Meeting 13	Kogarah Historical Society General Meeting (2pm) 14	15	16	OASC Meeting ○ Full Moon 17
18	19	20	21	22	23	OASC Meeting 24
Oatley Flora & Fauna Conservation Society Meeting 25	26	27	28	Oatley Heritage & Historical Society Meeting 29	30	

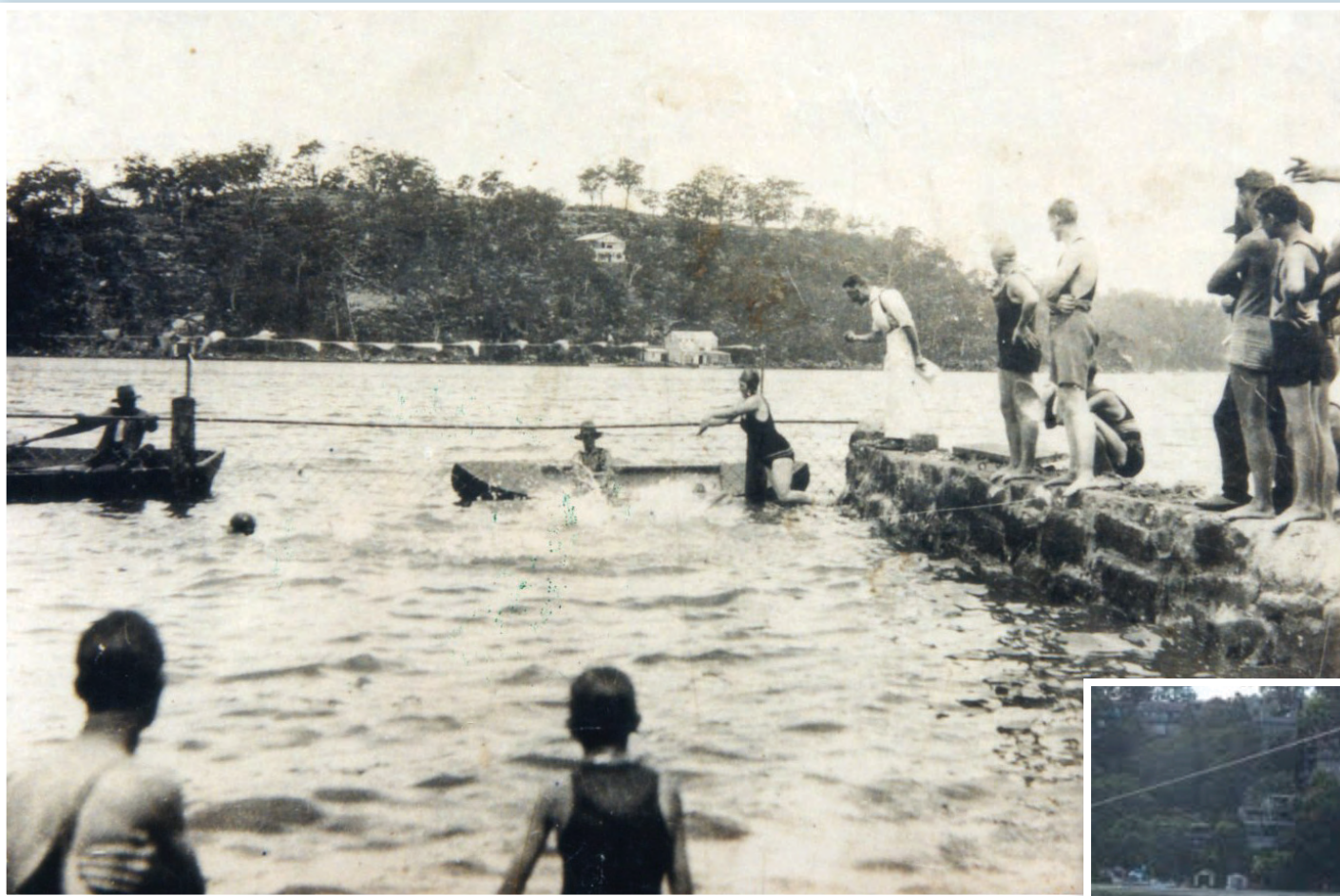


St. Paul's Anglican Church, Oatley

1930, 1966 and 2012

December 2013

Monday	Tuesday	Wednesday	Thursday	Friday	Saturday	Sunday
30	31	The original church was opened in 1911 and then in 1966 was moved 50 metres to the north and a new 'A' frame church was built on the corner. The original church now accommodates St Paul's Arndu Pre- School. In the mid 1980's a hall and second storey was added to the church becoming the Dorothy Woodhill Education Centre. A tennis court once occupied the land at the back of the church until an army hut from Herne Bay (now Riverwood) was placed there to be used as a Sunday School and for Youth Activities – this area now houses the carpark and playground.				OASC Meeting
2	3	4	5	6	Gallery 101	Gallery 101 OASC Meeting
9	10	Oatley Probus Meeting	12	13	Carols in the Park	OASC Meeting
16	○ Full Moon	18	19	School term ends	21	OASC Meeting
23	24	Christmas Day	Boxing Day	27	28	OASC Meeting
		25	26			29

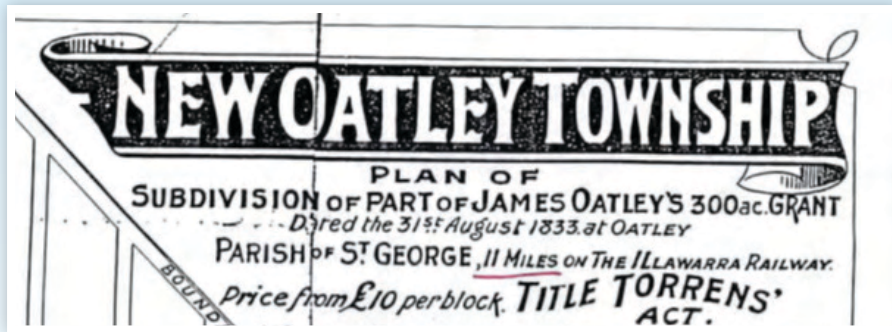


Swimming Races, Oatley Park

1928 and 2012

January 2014

Monday	Tuesday	Wednesday	Thursday	Friday	Saturday	Sunday
<p>This photo is of an Oatley Swim Club race start in 1928, the race starter is Alderman Hedley Mallard, the first Club President and a former Mayor of Hurstville. Mallard Drive, the road around Oatley Park, is named after him. His house in Marine Drive can be seen in the photo on the hillside. His daughter lives in Marine Drive today!</p>		<p>New Year's Day</p> <p>1</p>	<p>2</p>	<p>3</p>	<p>4</p>	<p>OASC Meeting</p> <p>5</p>
<p>6</p>	<p>7</p>	<p>Oatley Probus Meeting</p> <p>8</p>	<p>9</p>	<p>10</p>	<p>11</p>	<p>OASC Meeting</p> <p>12</p>
<p>13</p>	<p>14</p>	<p>15</p>	<p>○ Full Moon</p> <p>16</p>	<p>17</p>	<p>18</p>	<p>OASC Meeting</p> <p>19</p>
<p>20</p>	<p>21</p>	<p>22</p>	<p>23</p>	<p>24</p>	<p>25</p>	<p>OASC Meeting Australia Day</p> <p>26</p>
<p>Australia Day Holiday</p> <p>27</p>	<p>School term resumes</p> <p>28</p>	<p>29</p>	<p>30</p>	<p>Chinese New Year</p> <p>31</p>		



Frederick St, Oatley

1934 and 2012

February 2014

Monday	Tuesday	Wednesday	Thursday	Friday	Saturday	Sunday
<p>The centre of Oatley, Frederick Street is one of many in the area bearing first names of Charles Cecil Griffiths siblings & their families. Griffiths purchased the land from James Oatley's son Frederick in March 1881 then sub-divided it in 1883. The Oatley Clock was constructed in 1983 for the 150th Anniversary to honour James Oatley (1770-1839) the suburbs namesake who was a clock & watchmaker. After being transported to Australia from England for stealing, James Oatley was granted land known as Snugborough Park (Beverly Hills) where he lived, & Needwood Park (Oatley). He also had a watchmaking business across from Sydney Town Hall in George St Sydney.</p>					1	2
Oatley Flora & Fauna Conservation Society Meeting						OASC Meeting
3	4	5	6	7	8	9
10	11	Oatley Probus Meeting	Kogarah Historical Society General Meeting (2pm)	○ Full Moon	15	OASC Meeting
17	18	19	20	21	22	OASC Meeting
Oatley Flora & Fauna Conservation Society Meeting				Oatley Heritage & Historical Society Meeting		
24	25	26	27	28		

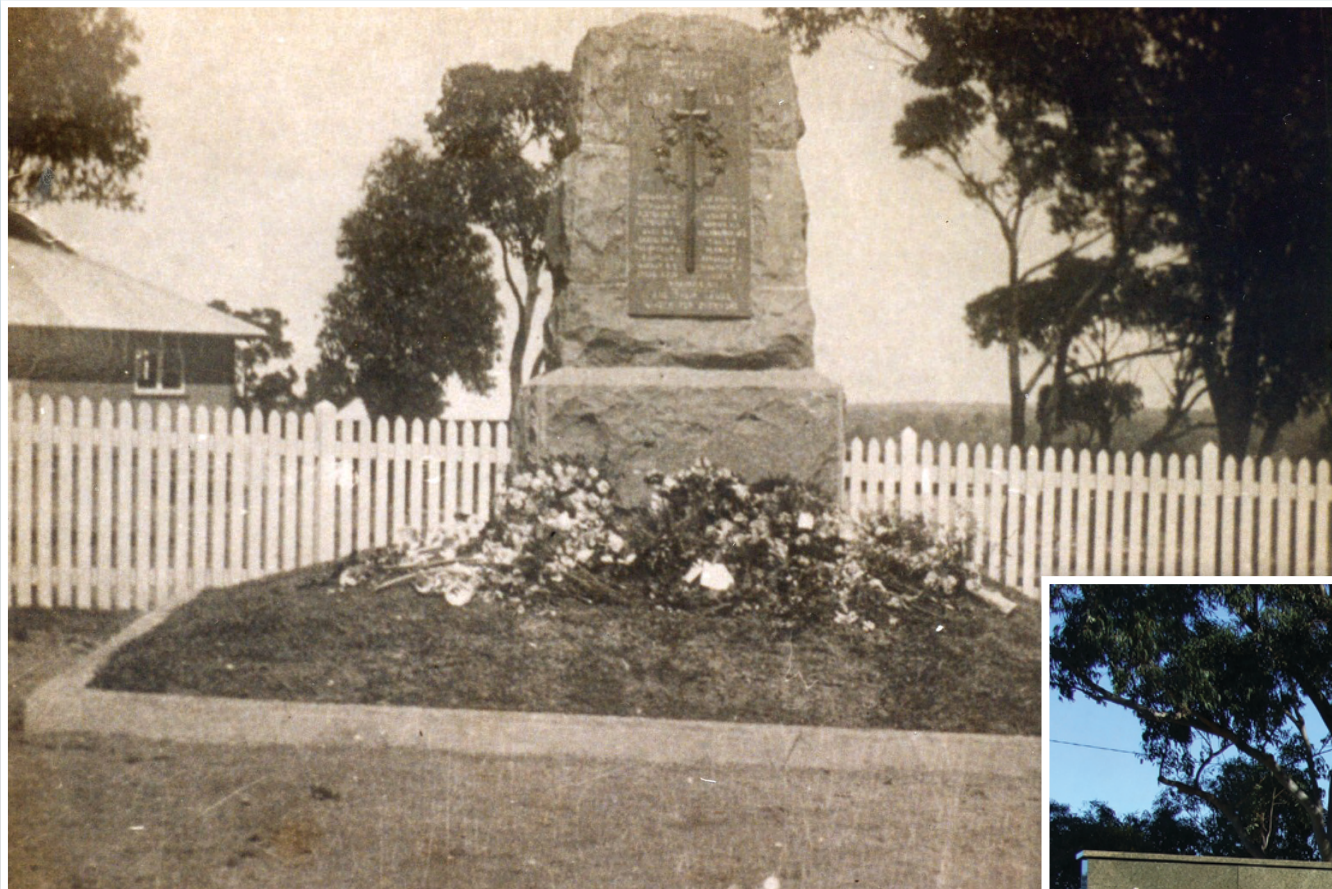


Oatley Picture Theatre

1946 and 2012

March 2014

Monday	Tuesday	Wednesday	Thursday	Friday	Saturday	Sunday
31	Built in 1942 as a movie theatre this building was modelled on New York's Radio Theatre complex built by millionaire J.D. Rockefeller in the Art Deco style of the 1930's. Mr & Mrs Fidden owned the theatre and famous Oatley personality George Kendall was a projectionist. A Mr Lawler used to run the bus service transporting patrons to and from the theatre at nights and children on Saturday afternoons. The theatre opened with the movie They Met in Bombay with Clarke Gable and Rosalind Russell. Mrs Joyce Marks (right) & Mrs Val Thompson (left) were usherettes/confectionery servers/cleaners at the theatre for over five years. Saturday nights were formal dress nights. The original ticket booth remains intact today. Before it was sold to Oatley RSL in 1962, it was used on Anzac Days and for reunions. The RSL converted it to its current use as a gymnastics training centre for local youth.				Gallery 101 1	Gallery 101 OASC Meeting 2
3	4	5	6	7	Gallery 101 Painting Demonstration 8	OASC Meeting 9
10	11	Oatley Probus Meeting 12	Kogarah Historical Society General Meeting (2pm) 13	14	15	Oatley Lions Music in the Park OASC Meeting ○ Full Moon 16
St. Patrick's Day 17	18	19	20	21	22	OASC Meeting 23
Oatley Flora & Fauna Conservation Society Meeting 24	25	26	27	28	29	OASC Meeting 30



Oatley War Memorial

1924 and 2012

April 2014

Monday	Tuesday	Wednesday	Thursday	Friday	Saturday	Sunday
				OWPS Art & Craft Show Opening Night	OWPS Art & Craft Show	OASC Meeting OWPS Art & Craft Show
	1	2	3	4	5	6
7	8	Oatley Probus Meeting	Kogarah Historical Society General Meeting (2pm)	School term ends	Gallery 101 Painting Demonstration	
		9	10	11	12	13
	○ Full Moon			Good Friday	Easter Saturday	
14	15	16	17	18	19	20
Easter Monday				Anzac Day		
21	22	23	24	25	26	27
Oatley Flora & Fauna Conservation Society Meeting School term resumes			In 1924 a committee decided that Oatley should have a war memorial. It was constructed on the corner of Letitia and Neville streets on a piece of land owned by the Oatley Public School, a plaque remains in its place today. The first ceremony was held at the memorial in 1924. In the early 1960s the memorial was moved to its current location in the South Park in the centre of Oatley, which in the 1920's was a filled with rubble left over from the railway diversion built in 1905. The Councils and Railways argued for 19 years over who owned the land and who was responsible for the removal of the rubble. The memorial was enhanced as per the recent photo in 2010 and is now known as Oatley Memorial Gardens.			
28	29	30				



Oatley Amateur Swimming Club

1927 and 2011



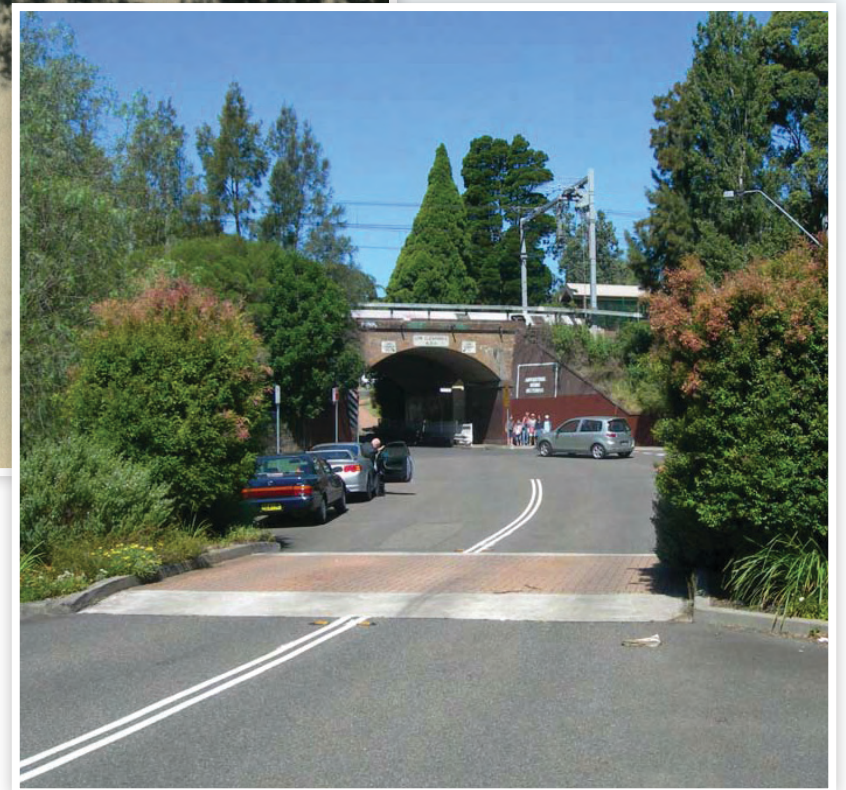
May 2014

Monday	Tuesday	Wednesday	Thursday	Friday	Saturday	Sunday	
<p>The Oatley Amateur Swimming Club was founded on 13th January 1927. The original dressing sheds were made of tin and the current amenities block was built in 1959. The Club has been involved in Life Saving training and encouraging swimming in the community. The swim club now has approximately 120 members and holds swimming races every Sunday from October to March and social activities on the foreshore area. They wear club swimming costumes and the traditional Oatley blue and yellow casual shirts and hats.</p>				Oatley Heritage & Historical Society Meeting	Gallery 101	Gallery 101	
				1	2	3	4
5	6	7	Kogarah Historical Society General Meeting (2pm)	8	9	10	11
		Oatley Probus Meeting ○ Full Moon				Gallery 101 Painting Demonstration	Mother's Day
12	13	14	15	16	17	18	
19	20	21	22	23	24	25	
Oatley Flora & Fauna Conservation Society Meeting				Oatley Heritage & Historical Society Meeting	Mortdale Community Services Fair		
26	27	28	29	30	31		



River Rd and Subway, Oatley

1926 and 2012



June 2014

Monday	Tuesday	Wednesday	Thursday	Friday	Saturday	Sunday
30	The River Rd rail bridge and underpass was built in 1905 after the railway had been diverted from its previous position near the Oatley Hotel due to steepness in the climb from the River at Como. River Rd did not exist prior to the new railway underpass as both Mulga Rd and Wonoona Pde both went straight to Oatley Ave. Many roads in the area were not yet sealed until the 1930's. The Bridge is NSW Heritage Listed.					1
2	3	4	5	6	7	8
Queen's Birthday 9	10	Oatley Probus Meeting 11	Kogarah Historical Society General Meeting (2pm) 12	○ Full Moon 13	Gallery 101 Painting Demonstration 14	15
16	17	18	19	20	21	22
Oatley Flora & Fauna Conservation Society Meeting 23	24	25	26	School term ends 27	28	29

Acknowledgements

Produced by Rodger Robertson and Carole Cerone

Carole and Rodger wish to thank and acknowledge the following:

Financial support provided by Oatley Lions Club.

Photos courtesy of Hurstville City Library Museum Gallery, Kogarah Council, Oatley Heritage and Historical Society members and archives, Mathew Wylie (OASC member), Bill Wright, Shirley Mullane and Debra Lynch (Lions Festival Photographic Competition Winner 2011).

Oatley Public School, Oatley West Public School, Oatley 101, Oatley Probus, Oatley Flora and Fauna Conservation Society, St. Joseph's Oatley School, Oatley Heritage and Historical Society, Oatley Lions and Mortdale Community Services for their assistance in providing dates.

Street names in Oatley: B Goodger

Early Oatley street names: Jan Crane

Designed by Tim James (www.timja.me/s)

Printed by Print Perfect St George (www.printperfect.com.au)



PRINTPERFECT
ST GEORGE

ph: 9758 0331



Important local websites

Oatley Heritage and Historical Society

www.oatleyheritagegroup.com

Oatley Lions Club

www.oatleylions.org.au

Kogarah Historical Society

www.kogarah.historicalsociety.com.au

Oatley Flora and Fauna Conservation Society

www.off.oatleypark.com

101 Artists of Oatley

www.oatley101.com

Mortdale Community Services

www.mortdalecs.org.au

Hurstville City Library Museum Gallery

img.hurstville.nsw.gov.au

Kogarah Library

www.kogarah.nsw.gov.au/library-services/family-history-and-local-studies

If you have any interesting photos of Oatley, recent or old, please contact Rodger Robertson from the Oatley Heritage and Historical Society on 9570 7471. "A photo taken today is tomorrow's history."

Dates and information correct at time of publication.

For purchase of more copies please contact Rodger on 9570 7471 or purchase at Oatley West Newsagency or Mullane's Pharmacy.

