

**Oatley Heritage and Historical Society**

**Shops in Oatley**

**By Terry Walker  
August 2016**

### **Oatley Shop History Project Acknowledgements August 2016**

This project, being dynamic in nature, has reached a stage where publication of results is possible.

There will be more investigation forthcoming to build on the developed footprint.

Acknowledgements:

All the people who have contributed articles over the past few years providing a wealth of material.

The Wilcox family for the collection of the material and many recent photographs.

The Committee for providing additional data from historical archives.

Volunteers who have provided information via an interview process in the last few weeks, including:

Norm Butters and family, Ralph and Eileen Walker, Barry Prescott, Jill Bateman, Pam and Graham Murphy, Gwen McMinn, Betty Wickers and Rafe and Moira Kowran.

# Oatley East

# Algernon Street and Clifton Street Boatshed? 20160515



## 38 Algernon Street Oatley 2016



## Oatley East – Reference Map 1.

No & Street	Date	Business Activity Information
38 Algernon Street	2016	Private Residence
	1951	Nicholsons Boatshed
	1936	Carson's Boatshed
	1912	Boatshed – Boat Builders Fletcher and Son

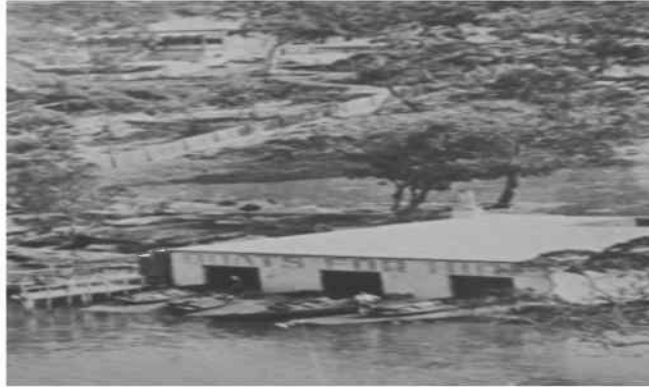
## 33 Annette Street Oatley 2016



## Oatley East

No & Street	Date	Business Activity Information
33 Annette Street	2016	Private Residence
	1940	General Store (The Bay Shop) - Milsop ( Also ran Oatley School Tuckshop
	1935	General Store (The Bay Shop) - Canning
	1930	General Store (The Bay Shop) - Ogg

## Oatley Pleasure Grounds Annette Street Oatley 2016



<b>No &amp; Street</b>	<b>Date</b>	<b>Business Activity Information</b>
Oatley Pleasure Grounds Annette Street	2016 1930 1920	Park – Kogarah Council Boatshed -Wine Bar - Hartlands Boatshed – Harry Linmark

Frederick Street, Letitia Street, Rosa Street Oatley East 20160515

Map 3.





Frederick Street North Oatley East 20160515

Map 2.



Frederick Street South, Letitia Street, Oatley Parade, Oatley Avenue Oatley East 20160515

Map 1.



### 3, 3A, 3B Frederick Street Oatley 2016



**Oatley East – Reference Map 1.**

No & Street	Date	Business Activity Information
3 Frederick Street	2016	Oatley House of Flowers
	1966	Jewellery, China, Dry Cleaning Mrs C Arrowsmith
	1970	Oatley Electronics (Findlow)
	1954	General Drapers – Library (Miss Smoblanch)
	1940	General Drapers (Seymours)
	1928	Mrs York Real Estate
3A Frederick Street	2016	Lee Hing Chinese Restaurant
	1955	Drycleaners
3B Frederick Street	2016	Oatley Dental Centre (Delaney)
	1960	Barnett - Dentist

## 4 Frederick Street Oatley 2016



### Oatley East – Reference Map 2.

No & Street	Date	Business Activity Information
4 Frederick Street	2016	CE Cranney & Co Solicitors
	2016	PRD Nationwide Real Estate
	1950	Dentist – Jack Farrell
	1940	Dentist – De Saxe (Suicide)
	1928	Dentist

## 5 Frederick Street Oatley 2016



### Oatley East – Reference Map 1.

No & Street	Date	Business Activity Information
5 Frederick Street	2016	5 Star Dry Cleaners
	1970	Beau Ideal Dry Cleaners ( Gaston)
	1960	Ham and Beef (Douglas)
	1950	Ham and Beef – (Mrs Silva)
	1928	Haberdashery - Drapers – (Mrs Seymour)

## 7 Frederick Street Oatley 2016



### Oatley East – Reference Map 1.

No & Street	Date	Business Activity Information
7 Frederick Street	2016 1975 1969	Gloria Jeans Coffee Cafe Harvey World Travel – St. George Travel 4 Square Supermarket

## 9 Frederick Street Oatley 2016



### Oatley East – Reference Map 1.

No & Street	Date	Business Activity Information
9 Frederick Street	2016 1960 1955	Oatley Fruit Market Fruit Shop (Gerace) Pemarchy Fruit



**6-10 Frederick Street Oatley 2016**



**6-10 Frederick Street Oatley 1959**

**Oatley East – Reference Map 2.**

<b>No &amp; Street</b>	<b>Date</b>	<b>Business Activity Information</b>
6 - 10 Frederick Street	2016 1959	Commonwealth Bank Commonwealth Bank



## 11 Frederick Street Oatley 2016



## Oatley East – Reference Map 1.

No & Street	Date	Business Activity Information
11 Frederick Street	2016 1983 1928	Oatley Cottage Patchwork & Embroidery Jutta's Family Fashion (Miss James) Original Post Office - (Lawson)

## 12 Frederick Street Oatley 2016



## Oatley East – Reference Map 2.

No & Street	Date	Business Activity Information
12 Frederick Street	2016 1959	O'Connor's Pharmacy O'Connor's Pharmacy

### 13 Frederick Street Oatley 2016



### Oatley East – Reference Map 1.

No & Street	Date	Business Activity Information
13 Frederick Street	2016	Oatley Village Newsagency
	1966	Oatley Newsagency
	1956	Newsagent – (Jimmy Silva)
	1954	Newsagent – (Stibbs)
	1943	Newsagent – (Stibbs)
	1928	Newsagent – (Phillips)
	1925	Newsagency – (Nicholson)

## 14 Frederick Street Oatley 2016



## Oatley East – Reference Map 2.

No & Street	Date	Business Activity Information
14 Frederick Street	2016 1970 1966	Shoe Repairs Daphne Ellen ladies wear, Haberdashery (Mrs Beckett) Oatley Electric T Whitfield

## 14A Frederick Street Oatley 2016



### Oatley East – Reference Map 2.

No & Street	Date	Business Activity Information
14A Frederick Street	2016	Phillip Hairdressing

## 15 Frederick Street Oatley 2016



### Oatley East – Reference Map 1.

No & Street	Date	Business Activity Information
15 Frederick Street	2016	Paveli Deli Café
	1970	Oatley Delicatessen (Y Nicol)
	1950	Eileen's Cake & Milk Bar (R & E Walker)

## 16 Frederick Street Oatley 2016



Oatley East – Reference Map 2.

No & Street	Date	Business Activity Information
16 Frederick Street	2016	Jumbuck Meat
	1998	Eggleton's Village Butchery
	1966	Condon's Butchery
	1960	Butcher (Arthur Shepherd)
	1954-1928	Butchers (Tom & Graham MacDonald)



## 17 Frederick Street Oatley 2016



### Oatley East – Reference Map 1.

No & Street	Date	Business Activity Information
17 Frederick Street	2016	Gypsy Unisex Hair Salon
	1950	Ladies and Gents Hairdressing (Fenwick & Miss Mac)
	1928	Barber ( Reg. Prescott)
	2016	Suite 1. Scents of Life – Catherine O'Connor Aromatherapy Suite 2/3. Music Teachers Association of NSW Suite 4. A.P Products Suite 5. Techlex Pty Ltd



## 18 Frederick Street Oatley 2016



## Oatley East – Reference Map 2.

No & Street	Date	Business Activity Information
18 Frederick Street	2016	Green Grocer (Ramon)
	1998	Maria and Mick Ferraro Fruit Shop and store
	1966	Grocery Store
	1975	Oatley Fruit Market
	1954	Groceries and Smallgoods (Kellie)
	1930	Hardware Store
	1928	Larkins Grocery

## 19 Frederick Street Oatley 2016



## Oatley East – Reference Map 1.

No & Street	Date	Business Activity Information
19 Frederick Street	2016	Oatley Optical
	2016	Oatley Fish & Chips
	1960	Westpac Bank
	1954	Grocery and Hardware (Riley and Cowle)

## 20 Frederick Street Oatley 2016



### Oatley East – Reference Map 2.

No & Street	Date	Business Activity Information
20 Frederick Street	2016	C & B Gourmet Shoppe
	1998	4 Square 7 Day Food
	1960	Moran and Cato Groceries
	1929	Post Office (Lawson)

## 21 Frederick Street Oatley 2016



### Oatley East – Reference Map 1.

No & Street	Date	Business Activity Information
21 Frederick Street	2016 1998 1940	Aurea Jewellery Hair Studio Fruit and Vegetables (Russell & Joan Marsh) (Originally combined with 21A)

## 21A Frederick Street Oatley 2016



### Oatley East – Reference Map 1.

No & Street	Date	Business Activity Information
21A Frederick Street	2016 1990	Remedy Health Store Oatley Threadbears

## 21B Frederick Street Oatley 2016



### Oatley East – Reference Map 1.

No & Street	Date	Business Activity Information
21B Frederick Street	2016	Oatley Physiotherapy
Suite 1	2016	Mortgage Choice

## 22 Frederick Street Oatley 2016



## Oatley East – Reference Map 2.

No & Street	Date	Business Activity Information
22 Frederick Street	2016	St. George Bank
	1954	Dunsmores Pharmacy
	1935	Pharmacy (Quinn)
	1928	Pharmacy (Chapman)



## 24 Frederick Street Oatley 2016



## Oatley East – Reference Map 2.

No & Street	Date	Business Activity Information
24 Frederick Street	2016	Kennedy's Boutique
	1998	Emma James Boutique
	1975	Oatley Hardware
	1970	Estate Agent Neville Weidemier
	1966	Estate Agent E Sainty



## 26 Frederick Street Oatley 2016



## Oatley East – Reference Map 2.

No & Street	Date	Business Activity Information
26 Frederick Street	2016	Hummingbird Lane Patisserie
	2014	Oatley Ovens
	1960	Ted's Cake Shop – Sponges

## 27 Frederick Street Oatley 2016 ??



### Oatley East – Reference Map 1.

No & Street	Date	Business Activity Information
27 Frederick Street	2016 1945 1939	Private Residence Smallgoods & Refreshments (F Stroh) Smallgoods & Refreshments (Wood)

## 28 Frederick Street Oatley 2016



## Oatley East – Reference Map 2.

No & Street	Date	Business Activity Information
28 Frederick Street	2016 1960	Baker's Delight TAB

## 29 Frederick Street Oatley 2016



## Oatley East – Reference Map 1.

No & Street	Date	Business Activity Information
29 Frederick Street	2016	Private Residence
	1940	Prescott Barber

## 30 Frederick Street Oatley 2016



Oatley East – Reference Map 2.

No & Street	Date	Business Activity Information
30A Frederick Street	2016 1998	Ray White Real Estate Brian's Quality Meat

### 30A Frederick Street Oatley 2016



### Oatley East – Reference Map 2.

No & Street	Date	Business Activity Information
30A Frederick Street	2016 1998	Ray White Real Estate Sleek Hair Design

## 32 Frederick Street Oatley 2016



### Oatley East – Reference Map 3.

No & Street	Date	Business Activity Information
32 Frederick Street – Shop 1	2016	Angel Touch Beauty
32 Frederick Street – Shop 2	1998	Lynden Construction
32 Frederick Street – Shop 3	2016	Oatley Massage, Therapy & Health Care
32 Frederick Street – Shop 4	2016	Birch Partners
32 Frederick Street – Shop 5	1998	Dental Surgeon - Stephen H Chin
32 Frederick Street – Shop 6	2016	
32 Frederick Street – Shop 7	1998	Ideal Dental
32 Frederick Street – Shop 8	2016	Skin Care Salon – Lee Farrow
32 Frederick Street – Shop 9A	1998	Elim Cafe
32 Frederick Street – Shop 9B	2016	Cafe Oatley
32 Frederick Street – Shop 9C	2016	Oatley Podiatry
32 Frederick Street – Suite 1	1998	Mortgage Choice
32 Frederick Street – Suite 2	1998	Scarfone Building Pty Ltd
32 Frederick Street – Suite 3	2016	Oatley Chirop & health Centre
32 Frederick Street – Suite 4	2016	Pilates Naturally
32 Frederick Street – Suite 5/6	1998	R.J. Graphic Design
32 Frederick Street – Suite 7	2016	Innovative Architects
	2016	Consulting Rooms
	1998	Discount Air
	1998	B.H. Burgess & Associates
	1998	The Thompson Minwax Co
	1998	RBA Group – Architectural Products
	1998	La Luna – Ristorante Italiano



## 32 Judd Street Oatley 2016



<b>No &amp; Street</b>	<b>Date</b>	<b>Business Activity Information</b>
32 Judd Street	2016 1966	Building Site (Since 1970) BP Oatley -0 E Woodroof



## 48 Judd Street Oatley 2016



<b>No &amp; Street</b>	<b>Date</b>	<b>Business Activity Information</b>
48 Judd Street	2016 1960	Private Residence Butcher (Col Campbell)

## 50 Judd Street Oatley 2016



<b>No &amp; Street</b>	<b>Date</b>	<b>Business Activity Information</b>
50 Judd Street	2016 1960	Private Residence's Grocery Store

Frederick Street, Letitia Street, Rosa Street Oatley East 20160515

Map 3.



## 13 Letitia Street Oatley 2016

### Rear Parking Area



### Oatley East – Reference Map 7.

No & Street	Date	Business Activity Information
13 Letitia Street	2016 1928	Rear Parking Area Edwards Bakery and shop at street front - Ron Peasley delivered bread with horse and cart.

## 15 Letitia Street Oatley 2016



### Oatley East – Reference Map 7.

No & Street	Date	Business Activity Information
15 Letitia Street	2016	Café
	2016	Health Plus Medical Centre
	2016	Sleek Hair Design
	1950	Service Station (Tate and Hurst)

## 16 Letitia Street Oatley 2016



### Oatley East – Reference Map 7.

No & Street	Date	Business Activity Information
16 Letitia Street	2016	La Dolce Espresso Café Parking
	2014	Oatley Video
	1975	Fenwick Motor vehicle Repairs
	1928	Shell Service Station ( Including 16A)

## 16A Letitia Street Oatley 2016



### Oatley East – Reference Map 7.

No & Street	Date	Business Activity Information
16A Letitia Street	2016	La Dolce Espresso Cafe
	1980	Wheel Re spoking, bicycles, motor bikes – Van Epen
	1950	Elaine Turner Shoes
	1928	Shell Service Station (Including 16 Letitia Street)



## 18 Letitia Street Oatley 2016



### Oatley East – Reference Map 7.

No & Street	Date	Business Activity Information
18 Letitia Street	2016	Oatley Cellars
	1966	Lorelle Children's Wear, Drapery
	1954	The Corner Store - Ellis (Groceries, Smallgoods, Cakes)
	1930	Ham and Beef - Binstead
	1928	Ham and Beef - Propsting



## 19 Letitia Street Oatley 2016



## Oatley East – Reference Map 7.

No & Street	Date	Business Activity Information
19 Letitia Street	2016	Chemist Cameron Stewart
	1966	The Corner Pharmacy
	1950	Pitkin's Shoe Repairs & Florist (Pictured)
	1935	Malcolm Butters Shoe Repairs (Also repaired horse saddles)
	1929	Avery's Shoe Repairs

## 21 Letitia Street Oatley 2016



### Oatley East – Reference Map 7.

No & Street	Date	Business Activity Information
21 Letitia Street	2016	Oatley Village Medical Centre
	2016	Douglas Hanley Moir Pathology
	1950	Dressmaker
	1941	Arnold Hairdresser
	1939	Fish Shop Miss May English (Fresh only)
	1929	Fish Shop Miss C Firth (Fresh only)

## 23 Letitia Street Oatley 2016



Oatley East – Reference Map 7.

No & Street	Date	Business Activity Information
23 Letitia Street	2016	Oatley RSL Youth Club
	2016	Oatley RSL Hall
	2016	Oatley RSL & Car Park
	1942	Radio Cinema

## 24A Letitia Street Oatley 2016



## Oatley East – Reference Map 7.

No & Street	Date	Business Activity Information
24A Letitia Street	2016	Guitar
	1998	Chartered Accountants - Phillip H Wilson
	1968	Fruit Shop (Murphy)
	1959	Milk Bar (Catering for Radio Theatre)
	1946	Fruit Shop (Sid & Jack Rawlings)
	1928	Fruit Shop Jessie Phillips

## 24B Letitia Street Oatley 2016



## Oatley East – Reference Map 7.

No & Street	Date	Business Activity Information
24B Letitia Street	2016	Oatley Post Office
	1983	Oatley Credit Union
	1928	Mrs York's Store

## 24C Letitia Street Oatley 2016

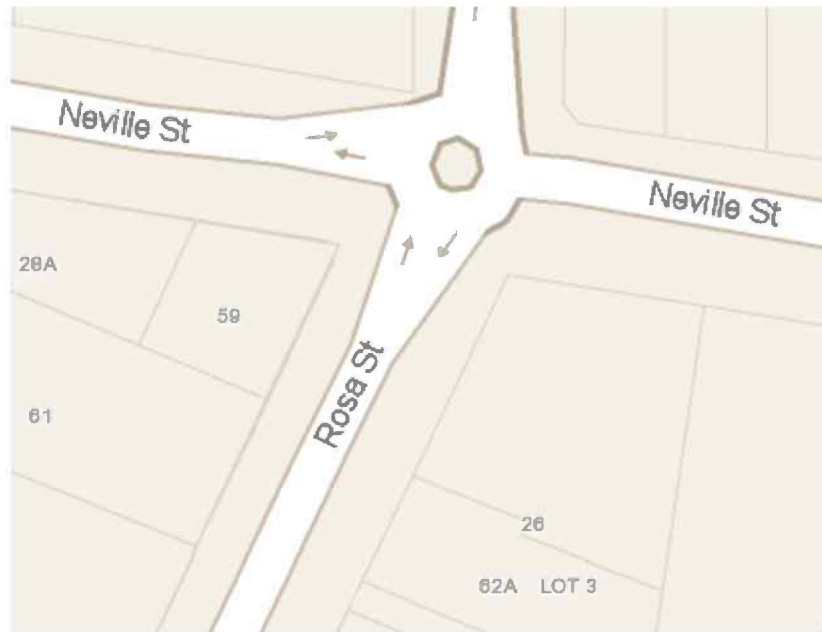


## Oatley East – Reference Map 7.

No & Street	Date	Business Activity Information
24C Letitia Street	2016	Chilli Man Thai Restaurant
	1998	Charlie Brown
	1954	Jeff's Butchery
	1945	Butcher M & A Buttel
	1944	Butcher M & A Buttel
	1942	Butcher M & A Buttel
1928	Butcher M & A Buttel	

Neville and Rosa Streets Oatley East 20160515

Map 4.



## Shop 59 Rosa Street 2016



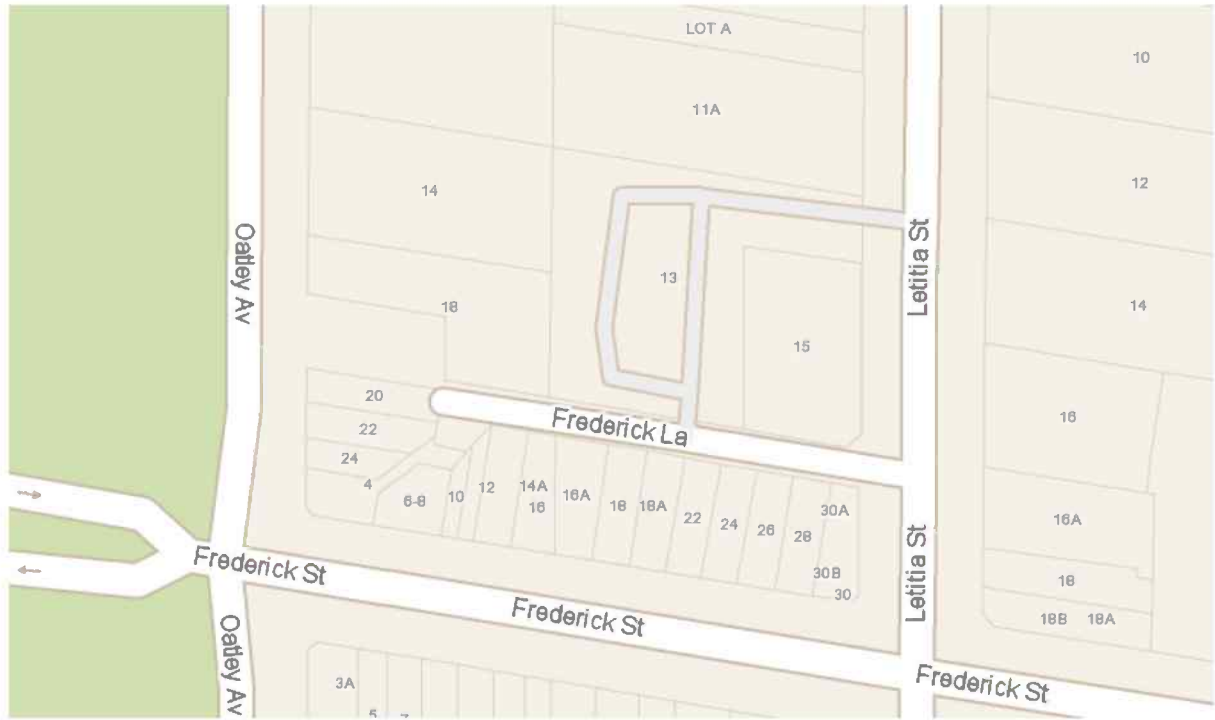
### Oatley East – Reference Map 4.

No & Street	Date	Business Activity Information
Shop 59 Rosa Street Oatley	2016	CHAOG Vietnamese Restaurant
	1998	John & Emille Mixed Business
	1980	Mixed Business
	1970	Mixed Business (Avgeris)



Frederick Street North Oatley East 20160515

Map 2.



Frederick Street South, Letitia Street, Oatley Parade, Oatley Avenue Oatley East 20160515

Map 1.



## 12 Oatley Avenue Oatley 2016



### Oatley East – Reference Map 1. & 2

No & Street	Date	Business Activity Information
12 Oatley Avenue	2016 1954	Clock & Oyster Pizza Cafe Radio and Electrical Appliances - Dunnes

## 14 Oatley Avenue Oatley 2016



### Oatley East – Reference Map 1. & 2

<b>No &amp; Street</b>	<b>Date</b>	<b>Business Activity Information</b>
14 Oatley Avenue	2016 1909	Oatley Hotel Original Oatley Post Office

## 18A Oatley Avenue Oatley 2016



## Oatley East – Reference Map 1. & 2

No & Street	Date	Business Activity Information
18A Oatley Avenue	2016 1960	CJ's Tasty Chicken Milk Bar and Take Away Shop

## 18B Oatley Avenue Oatley 2016



### Oatley East – Reference Map 1. & 2

No & Street	Date	Business Activity Information
18B Oatley Avenue	2016 1980	Echoes Boutique Oatley Hardware

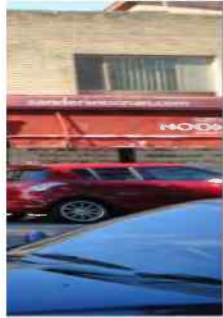
## 18C Oatley Avenue Oatley 2016



## Oatley East – Reference Map 1. & 2

No & Street	Date	Business Activity Information
18C Oatley Avenue	2016 1949	IGA Supermarket Taxi Service (Harold Eggleton)

## 20 Oatley Avenue Oatley 2016



## Oatley East – Reference Map 1. & 2

No & Street	Date	Business Activity Information
20 Oatley Avenue	2016 1966 1954	Sanders Noonan Real Estate C A Sanders Real Estate Dry Cleaner and Florist (Copley)



## 22 Oatley Avenue Oatley 2016



## Oatley East – Reference Map 1. & 2

No & Street	Date	Business Activity Information
22 Oatley Avenue	2016	Scandals Oatley – Boutique
	1967	Sanders Oatley Real Estate
	1966	Butchery (Paynes)
	1945	Butcher (H Dugman)
	1942	Butcher (A P Draper)
	1939	Butcher (A P Draper)
	1933	Butcher (A P Draper)

## 24 Oatley Avenue Oatley 2016



## Oatley East – Reference Map 1. & 2

No & Street	Date	Business Activity Information
24 Oatley Avenue	2016 1960	Clock Butchery Fish & Chips ( Mr Low)

## 26 - 28 Oatley Avenue Oatley 2016



### Oatley East – Reference Map 1. & 2

<b>No &amp; Street</b>	<b>Date</b>	<b>Business Activity Information</b>
26-28 Oatley Avenue	2016	Hair Dresser

## 32 Oatley Avenue Oatley 2016



### Oatley East – Reference Map 1. & 2

<b>No &amp; Street</b>	<b>Date</b>	<b>Business Activity Information</b>
32 Oatley Avenue	2016	Café (Roberts)

**34A Oatley Avenue Oatley 2016**



**Oatley East – Reference Map 1. & 2**

<b>No &amp; Street</b>	<b>Date</b>	<b>Business Activity Information</b>
34A Oatley Avenue	2016 1998	Vacant Independent Valuation Services (Sanders Oatley)

## 34B Oatley Avenue Oatley 2016

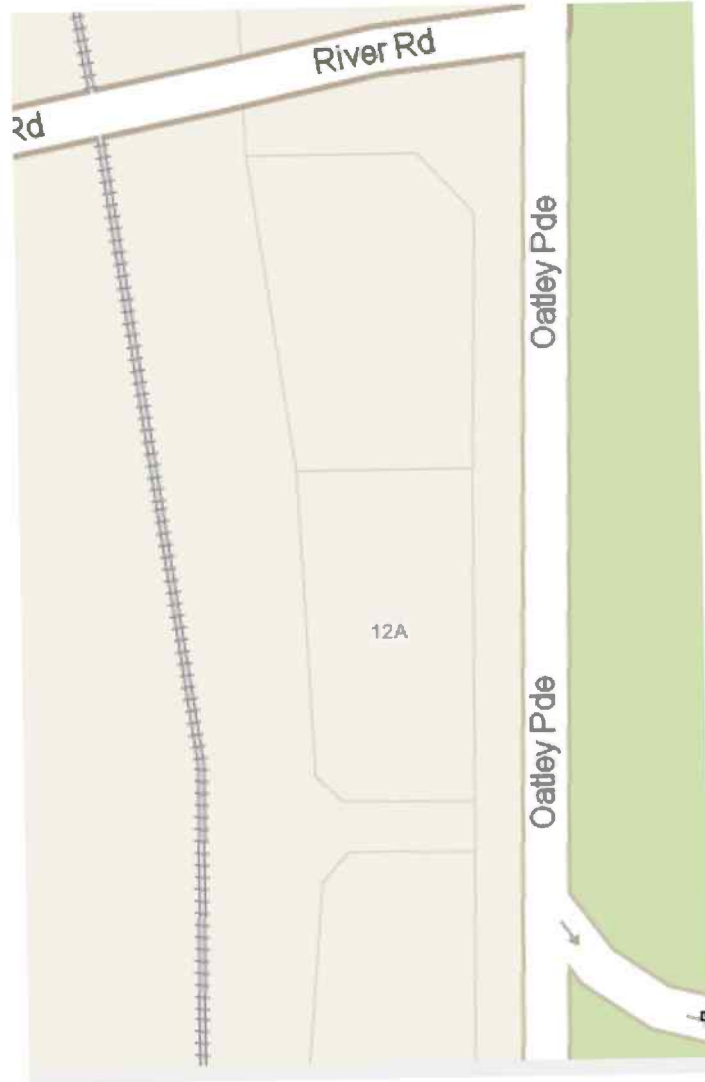


## Oatley East – Reference Map 1. & 2

No & Street	Date	Business Activity Information
34B Oatley Avenue	2016 1950	Oatley Village Pies Church of Later Day Saints

# Oatley Parade

## Map 7.



## Shop 12. Oatley Parade 2016



## Oatley East – Reference Map 7.

No & Street	Date	Business Activity Information
Shop 12. Oatley Parade	2016 1966	Budget Petrol Oatley Heights Auto Port (Shell)



## Shop 12 / 1. Oatley Parade 2016



## Oatley East – Reference Map 7.

<b>No &amp; Street</b>	<b>Date</b>	<b>Business Activity Information</b>
Shop 12 / 1. Oatley Parade	2016 1970	Dental Surgeon Oatley Real Estate - Neville Weidemier

## Shop 12 / 2. Oatley Parade 2016



## Oatley East – Reference Map 7.

<b>No &amp; Street</b>	<b>Date</b>	<b>Business Activity Information</b>
Shop 12 / 2. Oatley Parade	2016 1970	Tidz Coffee Cafe Oatley Fish & Chips

### Shop 12 / 3. Oatley Parade 2016



### Oatley East – Reference Map 7.

<b>No &amp; Street</b>	<b>Date</b>	<b>Business Activity Information</b>
Shop 12 / 3. Oatley Parade	2016  1970	Cynthia's Electrolysis & Skin Care Beauty Salon Built

## Shop 12 / 4. Oatley Parade 2016



### Oatley East – Reference Map 7.

<b>No &amp; Street</b>	<b>Date</b>	<b>Business Activity Information</b>
Shop 12 / 4. Oatley Parade	2016 1998 1970	Skeeta & Jacks Wine Bar Garita's Trattoria Italian Cuisine Built

### Shop 12 / 5. Oatley Parade 2016



### Oatley East – Reference Map 7.

<b>No &amp; Street</b>	<b>Date</b>	<b>Business Activity Information</b>
Shop 12 / 5. Oatley Parade	2016 1998 1970	Oatley Nails Oatley Physiotherapy & Sports Injury Centre Built

## Shop 12A. Oatley Parade 2016



## Oatley East – Reference Map 7.

<b>No &amp; Street</b>	<b>Date</b>	<b>Business Activity Information</b>
Shop 12A. Oatley Parade	2016 1966	Mechanic's R Us Built (Originally all Auto Port)

## First Shop Oatley Parade 2016



## Oatley East – Reference Map 7.

<b>No &amp; Street</b>	<b>Date</b>	<b>Business Activity Information</b>
Shop Oatley Parade (Now Bus Shelter)	2016 1966 1905	New East side stairway to Oatley Station Bus Shelter - Memorial Gardens Mixed Business (Vera Coleborne) Also was gatekeeper for rail crossing in Park.

Rosa Street and Hurstville Road Oatley East 20160515



Page's Factory



## Shop 59 Rosa Street 2016



### Oatley East – Reference Map 4.

No & Street	Date	Business Activity Information
Shop 59 Rosa Street Oatley	2016	CHAOG Vietnamese Restaurant
	1998	John & Emille Mixed Business
	1980	Mixed Business
	1970	Mixed Business (Avgeris)

## 21 Hurstville Road Oatley 2016



## Oatley East – Reference Map Rosa Street & Hurstville Road

No & Street	Date	Business Activity Information
21 Hurstville Road	2016	Home Units
	1920	Pages factory – Number Plate Manufacturer
	1918	Motor Repairs, Cars Garaged Millington
	1910	Motor Repairs, Cars Garaged Charlie Bradley

# Oatley West

## 1 Lansdowne Parade Oatley 2016



<b>No &amp; Street</b>	<b>Date</b>	<b>Business Activity Information</b>
1 Lansdowne Parade Oatley	2016 1995 1965	Private Residence Electronics Warehouse Hairdresser

## 11 Lansdowne Parade Oatley 2016



<b>No &amp; Street</b>	<b>Date</b>	<b>Business Activity Information</b>
11 Lansdowne Parade Oatley	2016 1980 1965	Consultant Offices Ehoes Ladies Fashion Butcher

### 3 Lansdowne Parade Oatley 2016



<b>No &amp; Street</b>	<b>Date</b>	<b>Business Activity Information</b>
3 Lansdowne Parade Oatley	2016 1980 1965	Private Residence Accountant – Ray Stevens Pharmacy - Fogden

## 5 Lansdowne Parade Oatley 2016



<b>No &amp; Street</b>	<b>Date</b>	<b>Business Activity Information</b>
5 Lansdowne Parade Oatley	2016 2000 1965	Private Residence Oatley Electronics (Branco Justic) Green Grocer (Natoli)

## 7 Lansdowne Parade Oatley 2016



<b>No &amp; Street</b>	<b>Date</b>	<b>Business Activity Information</b>
7 Lansdowne Parade Oatley	2016 1965	Sound Shop Milk Bar (Natoli)



## 9 Lansdowne Parade Oatley 2016



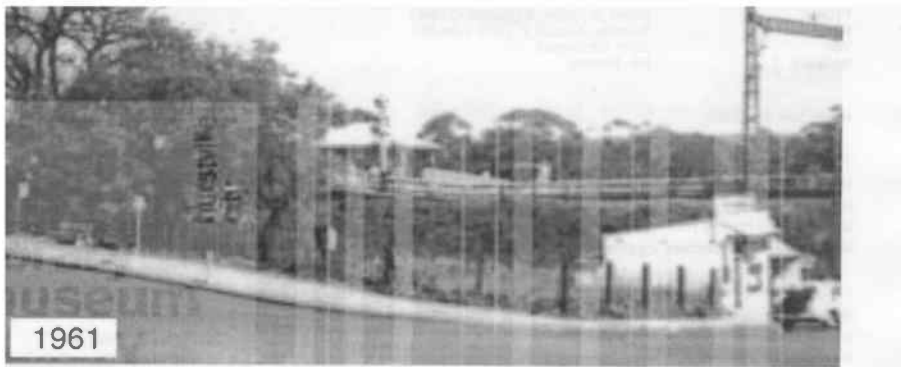
<b>No &amp; Street</b>	<b>Date</b>	<b>Business Activity Information</b>
9 Lansdowne Parade Oatley	2016 1965	Private Residence 4 Square Supermarket (Sixty)

## Boatsheds Marine Drive Oatley 2016



No & Street	Date	Business Activity Information
Boatshed 1 28A Marine Drive	2016	Private Residence
	1995	Boatshed – Peter Maher
	1960	Boatshed –Groceries (Caldwell)
	1950	Boatshed - Groceries (Smith)
	1953	Ward
	1926	George Pryor
Boatshed 2 36A Marine Drive	2016	Private Residence
	1958	Boatshed – Humphries
	1950	Boatshed – Bland (Motor Boat Races organised from this site 1950's)
	1940	Callows Boatshed
	1936	Wilcox Boatshed

### Shop 1 River Road Oatley East 2016



### Oatley East – Reference Map 7.

No & Street	Date	Business Activity Information
Shop 1 River Road Oatley East	2016	Douglas Cross Memorial Gardens
	1965	
	1950	Green Grocer Stall

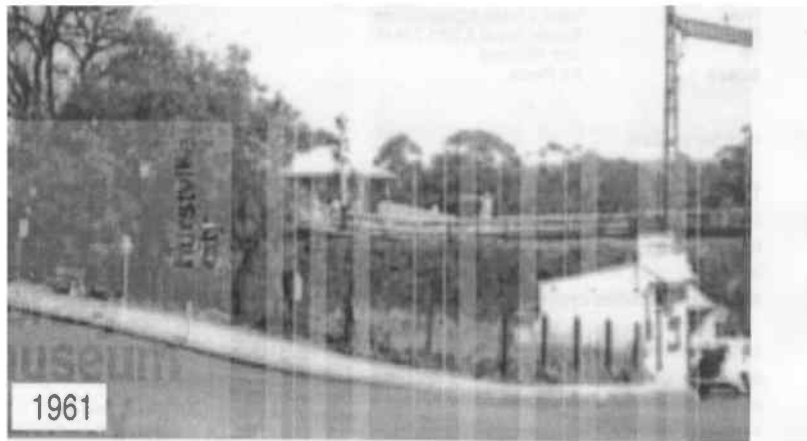
## Shop 1A River Road Oatley East 2016

No Picture Available

### Oatley East – Reference Map 7.

No & Street	Date	Business Activity Information
Shop 1A River Road Oatley East (Oatley Station Ramp)	1960	Oatley Station Kiosk – Smith
	1950	Oatley Station Kiosk – R & E Walker
	1929	Station stall – Uncle Tom’s Cabin (Cigarettes, confectionery)

## Shop 2 River Road Oatley East 2016



## Oatley East – Reference Map 7.

No & Street	Date	Business Activity Information
Shop 2 River Road Oatley East	2016	Douglas Cross Memorial Gardens
	1965	
	1950	Real Estate - Sainty

## 101 Mulga Road Oatley 2016



### Oatley West– Reference Map 5.

<b>No &amp; Street</b>	<b>Date</b>	<b>Business Activity Information</b>
101 Mulga Road Oatley	2016	Edmonds and Greer

## 103 Mulga Road Oatley 2016



Oatley West– Reference Map 5.

No & Street	Date	Business Activity Information
103 Mulga Road Oatley	2016 1983 1970	Evolution Hair Dresser Butcher Shop – Mick Taylor Butcher Shop – Stan Bonham

## 105 Mulga Road Oatley 2016



### Oatley West– Reference Map 5.

No & Street	Date	Business Activity Information
105 Mulga Road Oatley	2016 2000 1960	Chiropractors Shanahan Keiran Four Square Mini Market Warmans Supermarket



## 107 Mulga Road Oatley 2016



### Oatley West– Reference Map 5.

<b>No &amp; Street</b>	<b>Date</b>	<b>Business Activity Information</b>
107 Mulga Road Oatley	2016 2013 1970	Mulga Shades Accountant Men's Wear Shop (Roy Fisher)

## 109 Mulga Road Oatley 2016



### Oatley West– Reference Map 5.

<b>No &amp; Street</b>	<b>Date</b>	<b>Business Activity Information</b>
109 Mulga Road Oatley	2016 2013 2000 1990	Mulga Road General Practice Medical Fresh Bake Cakes Linen Shop Buttons and Bows

## 111 Mulga Road Oatley 2016



### Oatley West– Reference Map 5.

No & Street	Date	Business Activity Information
111 Mulga Road Oatley	2016	Mullane's Pharmacy Post Office temp Site
	2013	Triathlon Shop
	2000	Organic Fruit Shop
	1990	Fruit Shop (Vass)
	1985	Fruit Shop
	1970	Fruit Shop ( Nick and Anna Fusulla)
	1950	Produce store – Dalton, Hand
	1930	Produce Store

## 113 Mulga Road Oatley 2016



### Oatley West– Reference Map 5.

No & Street	Date	Business Activity Information
113 Mulga Road Oatley	2016	Verdaflore Florist
	1970	Men's Hairdresser (Owen Brown)
	1950	Grocery Store (Heap)
	1935	Grocery Store (Dargin)

## 115 Mulga Road Oatley 2016



### Oatley West– Reference Map 5.

No & Street	Date	Business Activity Information
115 Mulga Road Oatley	2016 1955 1950 1930	Yes Thai - Restaurant Oatley West Newsagency – Jim Yates Pharmacy (Pat Mullane) Fruit Shop (Leach)

**117/119/1 Mulga Road Oatley 2016**



**Oatley West– Reference Map 5.**

<b>No &amp; Street</b>	<b>Date</b>	<b>Business Activity Information</b>
117 Mulga Road Oatley	2016 1970	Oatley West Newsagency Newsagency - (Maxwell)

## 117/119/2 Mulga Road Oatley 2016



### Oatley West– Reference Map 5.

No & Street	Date	Business Activity Information
119 Mulga Road Oatley	2016 2000	Bitton Restaurant Mulga Tree Restaurant

## 12 Acacia Oatley 2016



### Oatley West– Reference Map 7.

<b>No &amp; Street</b>	<b>Date</b>	<b>Business Activity Information</b>
12 Acacia Street Oatley	2016 1980 1954	Private Residence Mixed Business Mixed Business (Alan Hatton)



## 121 Mulga Road Oatley 2016



### Oatley West– Reference Map 5.

No & Street	Date	Business Activity Information
121 Mulga Road Oatley	2016	Café One to One
	2014	Ambrosia Delicatessen
	1970	Health Food Store (Johnson)
	1960	Health Food Store (Hossie)
	1950	Bootmaker (Mr Rose)
	1935	Bootmaker (Erful)

## 121A Mulga Road Oatley 2016



### Oatley West– Reference Map 5.

No & Street	Date	Business Activity Information
121A Mulga Road Oatley	2016 1980 1955	Mullane's Pharmacy Construction Mullane's Pharmacy Post Office Mullane's Pharmacy

## 147 Woronora Parade Oatley 2016



<b>No &amp; Street</b>	<b>Date</b>	<b>Business Activity Information</b>
147 Woronora Parade Oatley	2016 1960 1946	Private Residence Private Residence (Russ Marsh) Dr Prot

## 20 River Road Oatley 2016



### Oatley West– Reference Map 1.

<b>No &amp; Street</b>	<b>Date</b>	<b>Business Activity Information</b>
20 River Road Oatley	2016 1920	Oatley Gospel Chapel Real Estate - Hogarth

### 3 Mulga Road Oatley 2016



### Oatley West– Reference Map 1.

No & Street	Date	Business Activity Information
3 Mulga Road Oatley	2016 1960	Private Residence Dentist - Martin

### 43 Mulga Road Oatley 2016



### Oatley West– Reference Map 3.

No & Street	Date	Business Activity Information
43 Mulga Road Oatley	2016	St. George Travel
	1980	Hairdresser
	1970	Oatley Pet Supplies
	1935	Grocery Store (Spruce)

### 45 Mulga Road Oatley 2016



### Oatley West– Reference Map 3.

No & Street	Date	Business Activity Information
45 Mulga Road Oatley	2016 1980 1970 1950 1935	Hairdresser Butcher Val's Poultry Butcher Butcher (Miller) Kept horses where Riley's Garage is now.

## 47 - 67 Mulga Road Oatley 2016



### Oatley West– Reference Map 3.

<b>No &amp; Street</b>	<b>Date</b>	<b>Business Activity Information</b>
47 - 67 Mulga Road Oatley	2016	Coles Mark's Restaurant Curves Thai Massage
	1960	Dr M'Cloud Surgery (Prior to Coles Development)



### 48 Waratah Street Oatley 2016



### Oatley West– Reference Map 3.

No & Street	Date	Business Activity Information
48 Waratah Street Oatley	2016	Private Residence
	1935	Private Residence
	1916	Original Grocery Store (Charles Small)

## 56 Mulga Road Oatley 2016



### Oatley West– Reference Map 3.

<b>No &amp; Street</b>	<b>Date</b>	<b>Business Activity Information</b>
56 Mulga Road Oatley	2016 1960	Private Residence Dr Ruut

## 6 Woronora Parade Oatley 2016



<b>No &amp; Street</b>	<b>Date</b>	<b>Business Activity Information</b>
6 Woronora Parade Oatley	2016 1940	Private Residence Mixed Business (Original Hatten's Grocer)

### 67 Myall Street Oatley 2016



### Oatley West– Reference Map 3.

No & Street	Date	Business Activity Information
67 Myall Street Oatley	2016	Private Residence
	1960	Nursery (Stead)

### 69 Mulga Road Oatley 2016



### Oatley West– Reference Map 3.

No & Street	Date	Business Activity Information
69 Mulga Road Oatley	2016	CFS Dental
	1946	Tailor (Fred Ogle)

## 71 Mulga Road Oatley 2016



### Oatley West– Reference Map 3.

No & Street	Date	Business Activity Information
71 Mulga Road Oatley	2016	La Zona Restaurant - Cafe
	1989	Tre Bob Seafood Restaurant
	1960	Clockmaker
	1956	Haberdashery – smallgoods (Crear and Smith)
	1949	Smallgoods and Ice cream (Bentley)
	1920	Photography Shop (Leggett)

### 73 Mulga Road Oatley 2016



### Oatley West– Reference Map 3.

No & Street	Date	Business Activity Information
73 Mulga Road Oatley	2016	Curtains and interior
	1989	Curtins Everywere
	1983	Hardware (B & P Harrison)
	1970	Hardware (Saldens)
	1960	Hardware (Wackett)
	1949	Greengrocer (Russ Marsh)

## 75 Mulga Road Oatley 2016

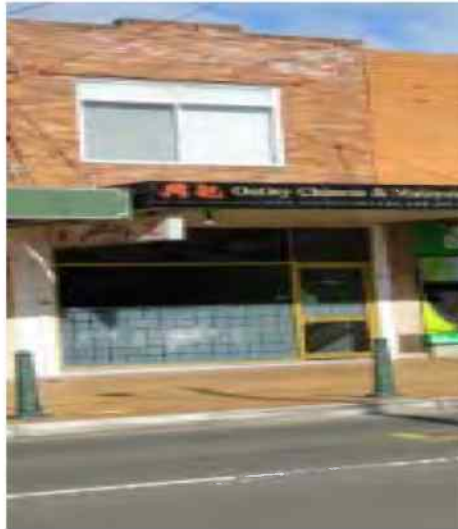


### Oatley West– Reference Map 3.

No & Street	Date	Business Activity Information
75 Mulga Road Oatley	2016 1965 - 1940 1930	Oatley Medical centre Grocery Store (Gardeners) Grocery Store (Rose)



## 75A Mulga Road Oatley 2016



### Oatley West– Reference Map 4.

<b>No &amp; Street</b>	<b>Date</b>	<b>Business Activity Information</b>
75A Mulga Road Oatley	2016 1965	Oatley Chinese and Malaysian Restaurant Green Grocery Stall (Deliveries made with RIO 1948 Truck) (Rawlings)

## 79 - 83 Mulga Road Oatley 2016



## Oatley West– Reference Map 4.

<b>No &amp; Street</b>	<b>Date</b>	<b>Business Activity Information</b>
79 - 83 Mulga Road Oatley	2016 1983	Oatley Cellars Oatley West Liquor Supply

## 85 Mulga Road Oatley 2016



Oatley West– Reference Map 4.

<b>No &amp; Street</b>	<b>Date</b>	<b>Business Activity Information</b>
85 Mulga Road Oatley	2016	Antennae Service

## 87 Mulga Road Oatley 2016



Oatley West– Reference Map 4.

No & Street	Date	Business Activity Information
87 Mulga Road Oatley	2016 1970 1950 1935	Oatley Pizza Village Studio A Hairdressing Men's Wear (Roy Fisher) Barber (Crabbe)

## 88 Myall Street Oatley 2016



### Oatley West– Reference Map 3.

<b>No &amp; Street</b>	<b>Date</b>	<b>Business Activity Information</b>
88 Myall Street Oatley	2016 1935	Private Residence Mixed Business

**89/1 Mulga Road Oatley 2016**



**Oatley West– Reference Map 4.**

<b>No &amp; Street</b>	<b>Date</b>	<b>Business Activity Information</b>
89/1 Mulga Road Oatley	2016	Reliable Computers

## 89/2 Mulga Road Oatley 2016



### Oatley West– Reference Map 4.

No & Street	Date	Business Activity Information
89/2 Mulga Road Oatley	2016 2012	Mulga Road Books (Hurstville Rotary Club) Coffee Shop
Suite 1 89/2 Mulga Road Oatley	2016	Anne Day & Associates Lawyers

## 91/1 Mulga Road Oatley 2016



### Oatley West– Reference Map 4.

No & Street	Date	Business Activity Information
91/1 Mulga Road Oatley	2016	Molly and Jacks Children's Fashion



## 91/2 Mulga Road Oatley 2016



### Oatley West– Reference Map 4.

No & Street	Date	Business Activity Information
91/2 Mulga Road Oatley	2016	Casey and Mannell - Architectural

## 91/3 Mulga Road Oatley 2016



### Oatley West– Reference Map 4.

No & Street	Date	Business Activity Information
91/3 Mulga Road Oatley	2016	Ray White Real Estate

## 91/4 Mulga Road Oatley 2016



### Oatley West– Reference Map 4.

No & Street	Date	Business Activity Information
91/4 Mulga Road Oatley	2016	Conveyancers

### 93/1 Mulga Road Oatley 2016



### Oatley West– Reference Map 4.

No & Street	Date	Business Activity Information
93/1 Mulga Road Oatley	2016	D'Continental Café (Ibrahim)

### 93/2 Mulga Road Oatley 2016



### Oatley West– Reference Map 4.

No & Street	Date	Business Activity Information
93/2 Mulga Road Oatley	2016	Kobito Japanese Sushi Restaurant

## 95 Mulga Road Oatley 2016



Oatley West– Reference Map 4.

No & Street	Date	Business Activity Information
95 Mulga Road Oatley	2016	Riley's Garage
	1946	Clarey Cox Garage
	1935	
	1920	Miller's Mulga Road Stables (Butcher from 43 Mulga Road)

## 97 Mulga Road Oatley 2016



### Oatley West– Reference Map 5.

<b>No &amp; Street</b>	<b>Date</b>	<b>Business Activity Information</b>
97 Mulga Road Oatley	2016 2000 1960	Edmonds and Greer Chicken and Hamburgers Fruit Shop - Toscano

## 99 Mulga Road Oatley 2016



### Oatley West– Reference Map 5.

<b>No &amp; Street</b>	<b>Date</b>	<b>Business Activity Information</b>
99 Mulga Road Oatley	2016 2015 1983	Edmonds and Greer Be Spoilt Skin Treatments Shae – Lene Hairdresser



## Corner Boundary and Woronora Parade Oatley 2016



No & Street	Date	Business Activity Information
Corner Boundary and Woronora Parade Oatley		<p>Opposite the Baptist Church on the corner of Boundary Road and Woronora Parade was Stella Baker and her brother Jack Baker, who ran this shop. They sold all sorts of grocery and sweets, weighing everything on a large scale and used brown paper bags for there goods, no plastic bags back then. They had big barrels full of individual Arnott's biscuits and you could choose the ones you wanted (before the days of prepackaging), Chairs to sit on while you waited with Butter, Cheese cut to just the amount you wanted, Sugar and Biscuits weighted out, a roll of boiled lollies each week when you paid your account, As a child you would take your empty soft drink bottles there to collect money and in return, hand it back over with a good size bag of lollies or biscuits. It even had a Produce store out the back and you were always felt welcomed with that good old fashion service.....</p> <p>[Photo courtesy Tony Ridgway taken 28 March 1987]</p>