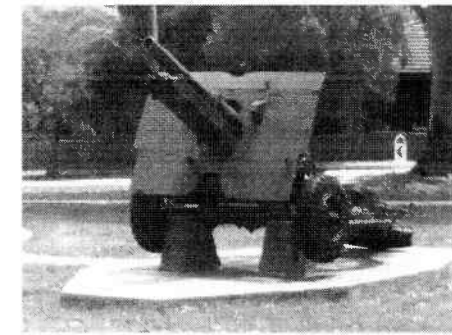


My father is only famous to me, I was asked to give a short talk about the Gun in Oatley Park. Dad, Kenneth Max Rasmus, (known as Max), was born in Whyte Yarcowie, South Australia in June 1914. He attended high school in Broken Hill. In 1937 he married my mother, Florence Grace Brooks at Jamestown, South Australia, and I arrived in 1938.

In 1941 the family moved to Oatley, N.S.W., and dad commenced work with the Colonial Sugar Refinery C.S.R. at Pyrmont in the Munitions Annex, he later became the Acting Productions Manager.

This is his connection with the Gun in the Memorial Park.

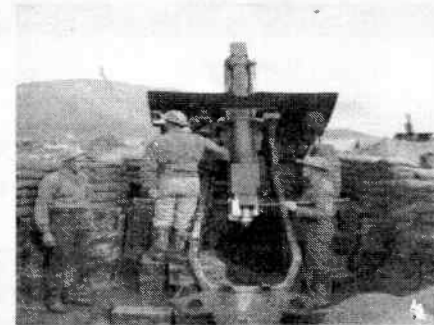
I have looked up some history about the 25 Pounder Mark 2 Field Gun, which is on a 25pr (pounder) Mark 1, Carriage, in the Oatley Memorial Park.



25 POUNDER GUN OATLEY
MEMORIAL PARK

The Gun was originally worked on at the Colonial Sugar Refinery CSR Workshop's Annex, at Pyrmont. The 25 Pounder Mark 2 Field Gun was the standard design that became a classic, and remained in service, well after the war.

It was erected in the Park in 1992 as a Memorial to those who gave their lives in WW2. It was donated by the Members of the 23rd Field Regiment, Royal Australian Artillery, Kogarah, N.S.W.



ASSEMBLED READY TO FIRE

SOME TECHNICAL INFORMATION and SOME INFO RE C.S.R.

During the War which broke out in September 1939, the C.S.R. Pyrmont Workshop was well prepared, an Annex had been built to manufacture War Materials, it was equipped with machine tools, supplied by the Commonwealth Government, and the machines were manned around the clock, 24 hours a day, employing 457 men also women and 7 blind men.

The Gun weighed 454kgs. (approx. 1,000lbs.), with the breech mechanism, and 1,800kgs. (approx. 3,968lbs.) in action, and had an overall length with the muzzle brake fitted (recoil compensator), of 2,170mm. (approx. 7ft.) The bore was rifled, 1 turn in 20 calibers and the caliber was 87.6mm. (approx. 3.45in.), the Shell weight was 11.5kgs. (approx. 25lb.), and it was crewed by 6 people.

The Serial No. is L6525, and it also shows that it was manufactured in 1942. The breech block is stamped Chubb 1942, and the adjoining Jacket is stamped 25 P^R 2 CSR C^o, Jacket N^o L/6525,806.

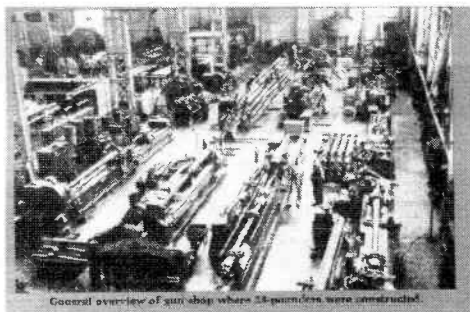
The elevation tilt of the Gun, ranged from -5° to +40° and the traverse was 4° left and right. Depending on the charge and projectile type, either (HE – high explosive, or AP – armour piercing), the maximum, HIGH EXPLOSIVE range was 12,250m, (13,400yds.) and in ARMOUR PIERCING format, it could penetrate 70mm (2.75in) plate, at 365.76m, (400 yards).

A Howitzer type variable charge communication was used.

The Gun Fire was 6-8 rpm, the Normal rate was 3 rpm.

The standard 25 pounder gun was redesigned, so that the gun unit, could be carried, and then quickly assembled, when and where needed.

Armour- piercing bombs were made for the first time. Australian steelmakers, with alloys available locally, resulted in the production of armour plate, without using nickel, which had to be imported. Certain metals previously untouched, or were only mined in small quantities in Australia, became important factors in the production of munitions – for example the use of magnesium and zircon alloy, in armour plate was used by Broken Hill Proprietary Co. Ltd.



At CSR Pyrmont, the Gun Annex was erected early in 1941 to finish off, and turn forged blanks, from other workshops for the Mark2 25 Pounder Field Gun barrels, jackets and sealing collars. These components were sub assembled at the front of the Work Shop, with the breech block/ loading mechanisms made by Chubb and boxed up for shipment. In all 882 barrels, 483 jackets and 483 sealing collars were produced and supplied to the Government.

ANNEX 1944

Complete gun assemblies with carriages were made at the Everleigh Railway Workshops.

The events at Dunkirk impressed the urgent need for munitions production to be stepped up and by November 1940 the shells completed, totalled 134,474.

They produced more than 1½ million shells, and over 23,000 signal pistols, also, work was carried out on guns, tanks, bomb lathes, aircraft parts, explosives, gas mask carbon, etc. All this equipment was supplied to the Australian Army, Royal Australian Navy and many other Armies.

All the work, was done, at no cost to the Commonwealth Government.

The Memorial in the Park was re dedicated on the 1st November 2009, with the addition of the Propeller and Anchor, placed alongside the 25 Pounder Gun.

ABOUT THE COLONIAL SUGAR REFINERY. The CSR was founded by a Danish Gentleman, Sir Edward Knox, in Sydney in 1855, later the Refinery was opened in 1877, at Bowman Street Pyrmont, and the Workshops opened in 1878. Over the years they engaged many Apprentices.

Breakdowns in the Sugar Refineries, of NSW and Qld., etc., were brought to the Workshops in Sydney to be repaired.



CSR WORKSHOP, BOWMAN STREET PYRMONT

Just as a side, Sir Charles Edward Kingsford Smith, joined the CSR Workshops in May 1913. Then in February 1915 he enlisted for Active Service, aged 18 years.